

EAGLE 

The Way to Go

PRODUCT CATALOG 2009





For the family, weekend anglers or tournament pros, Eagle® makes successful fishing and GPS navigation simple for everyone. So make the most of your time on the water. For the reliable choice in quality, performance and value, Eagle® is the way to go.

Contents

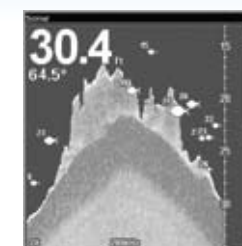
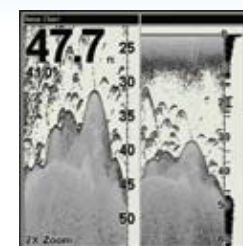
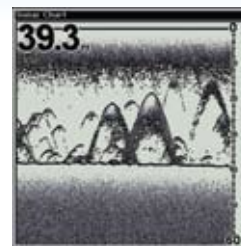
NEW COMPACT FISHFINDERS		
Cuda®	2	
FishEasy®	4	
Portables.....	6	
FULL-SIZE FISHFINDERS		
FishMark® 200 kHz	8	
SeaFinder® 50/200 kHz	10	
FISHFINDERS/GPS CHARTPLOTTERS		
FishElite® 200 kHz.....	12	
SeaCharter® 50/200 kHz	14	
GPS CHARTPLOTTER		
IntelliMap®	15	
VHF RADIOS.....	16	
CARTOGRAPHY.....	18	
HIGH-PERFORMANCE SKIMMER® TRANSDUCERS.....		20
SPECIFICATIONS.....	22	
ABOUT NAVICO.....	24	

NEW COMPACT CHOICES

Whether you need the best value in fish-finding, an easy-to-use portable for your kayak, or a compact sonar with built-in GPS and a high-detail map, Cuda® has the options covered.



EASY-TO-VIEW DATA



SONAR
GRAYLINE® display enhances target separation and helps define bottom composition.

SPLIT SCREEN
In split-screen sonar mode, anglers can zoom in for a closer look at targets on one side, while monitoring the entire water column on the other side.

NIGHT VIEWING
Night Viewing is one of the many sonar display modes you can select for enhanced viewing to match conditions—from total darkness to the brightest sunlight.



**NEW CUDA® 350 S/MAP
COMPACT SONAR/MAPPING GPS**

**NEW CUDA® 300
COMPACT SONAR**



Part Number 116-37

- SONAR**
- 800 watts peak-to-peak/100 watts RMS with depths to 600 ft./183 m*
 - Compact 200 kHz Skimmer® transducer with built-in temp sensor and up to 60° of fish detection coverage

- CHARTPLOTTER**
- Space-saving case design with internal 12-parallel channel GPS+WAAS antenna
 - Built-in high-detail mapping of lakes, rivers, Great Lakes, and U.S. coastal waters with enhanced shoreline detail and nav aids
 - Saves up to 1,000 waypoints and event markers each
 - Up to 100 savable plot trails

- PLUS**
- 10 international languages
 - Back-up memory
 - Sealed and waterproof
 - Full one-year warranty

Part Number 110-92

Simple to use with excellent performance and resolution at a fantastic low price with the new, affordable Cuda® 300 fishfinder!

- DISPLAY**
- Super sunlight-viewable 4"/10.2 cm Film SuperTwist LCD display
 - 240Vx160H pixel resolution

- SONAR**
- 800 watts peak-to-peak/100 watts RMS with depths to 600 ft./183 m*
 - High-speed 200 kHz Skimmer® transducer with built-in temp sensor and up to 60° of fish-detection coverage
 - Hands-free ASP™ operation, GRAYLINE®, Advanced Fish I.D.™, FishTrack™
 - Sealed and waterproof

*Actual depth capabilities depend on transducer configuration and installation, bottom composition and water conditions. All sonar units typically read deeper in fresh water than salt water.





FISHEASY®

Compact Fishfinders



NEW ITEM FOR 2009!

PERFORMANCE AND VALUE

Don't settle for less in a compact sonar unit. With new super-bright color display and superb Dual-Search sonar options, FishEasy® is a perfect choice for ease-of-use and reliability, in an affordable package.



NEW FISHEASY® 350c WITH BRIGHTER DISPLAY



Part Number 123-59

DISPLAY

- New, brighter 3.5"/8.9 cm diag. 320Vx240H pixel, 256-color, active matrix TFT display is now even more viewable even in direct sunlight
- COLORLINE™ feature improves target definition and defines bottom composition

SONAR

- 800 watts peak-to-peak/100 watts RMS with depths to 600 ft./183 m*
- High-speed 200 kHz Skimmer® transducer with built-in temp sensor and up to 60° of fish-detection coverage
- Adjustable ping speed with automatic HyperScroll™ feature display fish targets at higher boat speeds

PLUS

- High-speed screen updates
- Sealed and waterproof

FISHEASY® 245 DS DUAL-SEARCH SONAR



Part Number 110-69

DISPLAY

- High-detail 240V x 160H pixel 4"/10.2 cm diag. Film Super-Twist LCD display
- FishReveal™ and HyperScroll™
- ASP™
- Advanced Fish I.D.™ with FishTrack™

SONAR

- Dual 83/200 kHz sounding for superb target detail and separation from shallow water to 800 ft./244m*
- Compact Dual-Search Skimmer® transducer with dual beams producing up to 120° of fish-finding coverage
- Built-in temp sensor

PLUS

- High-speed screen updates and back-up memory
- 10 international languages
- Sealed and waterproof
- Full one-year warranty



HOW DUAL-SEARCH WORKS

The extremely compact, 83/200 kHz dual-search Skimmer® transducer produces incredible shallow and deep water coverage. With innovative dual beams, the transducer's 83 kHz beam provides up to 120° of super-wide fishfinding coverage, while the 200 kHz beam provides an impressive 60° of under-water coverage. Together, anglers enjoy optimum fishfinding performance.

*Actual depth capabilities depend on transducer configuration and installation, bottom composition and water conditions. All sonar units typically read deeper in fresh water than salt water.





PORTABLES

NEW ITEMS FOR 2009!

Fishfinders

TAKE THEM ANYWHERE

With their long-lasting power packs, our Eagle® Portables will extend your time on the water, without having to worry about wiring. Go ultra-compact or choose full-featured with this group of versatile fishfinders.



NEW CUDA® 300 PORTABLE



Part Number 110-93

DISPLAY

- Super sunlight-viewable 4"/10.2 cm Film SuperTwist LCD display
- 240Vx160H pixel resolution

SONAR

- 800 watts peak-to-peak/100 watts RMS with depths to 600 ft./183 m*
- 200 kHz Skimmer® transducer with built-in temp sensor and up to 60° of fish detection coverage
- Hands-free ASP™ operation, GRAYLINE®, Advanced Fish I.D.™, FishTrack™
- Sealed and waterproof

Comes with Porta-Power Pack case and portable 200 kHz Skimmer® transducer with suction-cup mounting bracket (batteries not included).

NEW FISHEASY® 350c PORTABLE



Part Number 123-60

DISPLAY

- New, brighter 3.5"/8.9 cm diag. 320Vx240H pixel, 256-color, active matrix TFT display is now even more viewable even in direct sunlight
- COLORLINE™ feature improves target definition and defines bottom composition

SONAR

- 800 watts peak-to-peak/100 watts RMS with depths to 600 ft./183 m*
- 200 kHz Skimmer® transducer with built-in temp sensor and up to 60° of fish-detection coverage
- Adjustable ping speed with automatic HyperScroll™ feature display fish targets at higher boat speeds

PLUS

- High-speed screen updates
- Sealed and waterproof

Comes with Porta-Power Pack case and portable 200 kHz Skimmer® transducer with suction-cup mounting bracket (batteries not included).

*Actual depth capabilities depend on transducer configuration and installation, bottom composition and water conditions. All sonar units typically read deeper in fresh water than salt water.

FISHEASY® 245 DS PORTABLE



Part Number 110-81

DISPLAY

- High-detail 240V x 160H pixel 4"/10.2 cm diag. Film SuperTwist LCD display
- FishReveal™ and HyperScroll™
- ASP™
- Advanced Fish I.D.™ with FishTrack™

SONAR

- Dual 83/200 kHz sounding for superb target detail and separation from shallow water to 800 ft./244m*
- Compact Dual-Search Skimmer® transducer with dual beams producing up to 120° of fishfinding coverage
- Built-in temp sensor

PLUS

- High-speed screen updates and back-up memory
- 10 international languages
- Sealed and waterproof
- Full one-year warranty

Comes with Porta-Power Pack case and portable 83/200 kHz Skimmer® transducer with suction-cup mounting bracket (batteries not included).

FISHMARK® 320 PORTABLE



Part Number 117-19

DISPLAY

- 320V x 320H pixel, 5"/12.7 cm diag. monochrome display with 16-level grayscale definition.
- High-speed screen updates
- Split-screen data/sonar graph display feature
- Overlay Data feature to place any sonar data on any full- or split-screen display

SONAR

- 1500 watts peak-to-peak/188 watts RMS, depths to 800 ft./244 m*
- Includes 200 kHz Skimmer® transducer with built-in temp sensor and up to 60° of fish detection coverage
- Adjustable Ping Speed with automatic HyperScroll™ for high-speed sounding
- GRAYLINE® to enhance target separation and help define bottom composition
- Multiple sonar display modes for angler preference, light conditions, and expose fish hidden in cover

- FasTrack™ vertical bar flasher shows real-time sonar returns and echo strength

PLUS

- Internal back-up memory for key sonar settings
- Completely sealed and waterproof
- Full one-year warranty

Comes with Porta-Power Pack case and portable 200 kHz Skimmer® transducer with suction-cup mounting bracket (batteries not included).

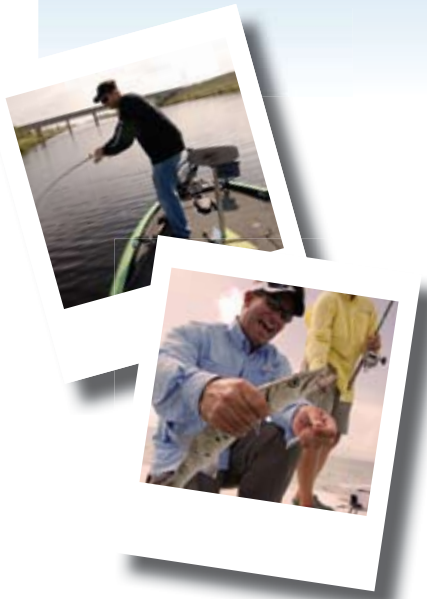


FISHMARK®

Full-Size Fishfinders – 200 kHz

FULLSIZE SONAR

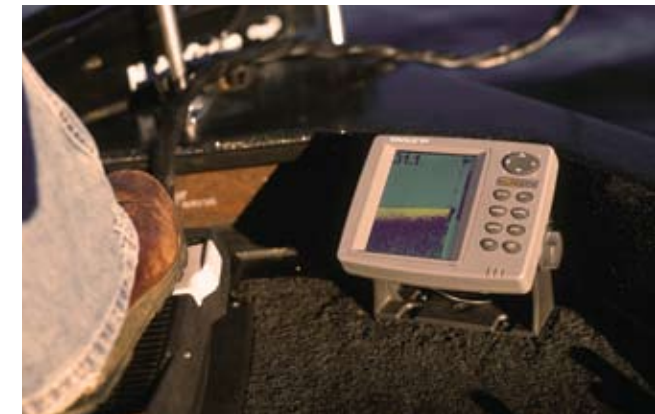
Brilliant color, a truly sunlight-viewable display, plus unbeatable performance and value makes the FishMark® 640c the best deal in fishfinding. And for an even more budget-conscious buyer, our monochrome FishMark® models deliver all that and more, with a great look and compact price tag.



HOW SONAR WORKS

SONAR is an abbreviation for “SOund, NAVigation, and Rang-ing”. It was developed as a means of tracking enemy submarines during World War II. A sonar consists of a transmitter, transducer, receiver, and display.

In the simplest terms, an electrical impulse from a transmitter is converted into a sound wave by the transducer and sent into the water. When this wave strikes an object, it rebounds. This echo strikes the transducer, which converts it back into an electric signal, which is amplified by the receiver and sent to the display. Since the speed of sound in water is constant (approximately 4800 feet per second), the time lapse between the transmitted signal and the received echo can be measured and the distance to the object determined. This process repeats itself many times per second.



FISHMARK® 640c COLOR SONAR



Part Number 123-26

DISPLAY

- Special 5"/12.7 cm diag. color-enhanced TFT display for maximum visibility and widest viewing angles even in bright sunlight
- 640V x 480H pixel resolution for superb sonar target detail/separation
- Advanced fluorescent cold-cathode screen and keypad backlighting
- High-speed screen updates
- Split-screen data/sonar graph display feature
- Overlay Data feature to place any sonar data on any full- or split-screen display

SONAR

- 1500 watts peak-to-peak/188 watts RMS, depths to 800 ft./244 m*
- Includes high-speed, transom-mount 200 kHz Skimmer® transducer with built-in temp sensor and up to 60° of

- fish detection coverage
- Adjustable Ping Speed with automatic HyperScroll™ for high-speed sounding
- COLORLINE™ to enhance target separation and help define bottom composition
- Multiple color sonar display modes for angler preference, light conditions, and expose fish hidden in cover
- FasTrack™ vertical bar flasher shows real-time sonar returns and echo strength

PLUS

- Internal back-up memory for key sonar settings
- Completely sealed and waterproof
- Full one-year warranty

FISHMARK® 480 MONOCHROME SONAR



Part Number 117-09

All the great FishMark® sonar features, with high-detail, 480V x 480H pixel, 5"/12.7 cm monochrome display with 16-level grayscale definition and GRAYLINE®.

FISHMARK® 320 MONOCHROME SONAR



Part Number 111-70

Same great FishMark® sonar features, with 320V x 320H pixel, 5"/12.7 cm diag. monochrome display with 16-level grayscale definition and GRAYLINE®.

*Actual depth capabilities depend on transducer configuration and installation, bottom composition and water conditions. All sonar units typically read deeper in fresh water than salt water.



SEAFINDER®

Full-Size Fishfinders – 50/200 kHz

DUAL-FREQUENCY DEDICATED SONAR

Powerful, full-featured 50/200 kHz SeaFinder® sonar performance and value for fishing deeper waters without digging deep into your pocket. Use 200kHz in shallow waters for increased definition, and switch to 50kHz for better deep-water performance.



DUAL-FREQUENCY BENEFITS

Eagle® 50/200 kHz sonar is the choice for fishing deeper waters of inshore coastal areas and the Great Lakes. The long wavelength of the lower 50 kHz frequency allows the sonar sound wave to penetrate deeper which makes it ideal for salt water and fresh water downrigger tracking.



SEAFINDER® 640c DF COLOR SONAR

SEAFINDER® 480 DF



Part Number 123-27

DISPLAY

- Sunlight-readable 5"/12.7 cm diag., 640V x 480H pixel, high-resolution color TFT display
- Temp/speed/distance displays
- High-speed screen updates
- Overlay Data feature to place any sonar data on any full- or split-screen display

SONAR

- 500 watts RMS/4,000 watts peak-to-peak, depths to 800 ft./457m* with 50 kHz
- Includes high-speed, transom-mount 50/200 kHz Skimmer® transducer with built-in temp sensor
- Adjustable Ping Speed with automatic HyperScroll™ for high-speed sounding

- COLORLINE™ to enhance target separation and help define bottom composition
- Multiple color sonar display modes for angler preference, light conditions, and expose fish hidden in cover
- FasTrack™ vertical bar flasher shows real-time sonar returns and echo strength

PLUS

- Internal back-up memory for key sonar settings
- Completely sealed and waterproof
- Full one-year warranty



Part Number 117-05

All the great SeaFinder® dual-frequency sonar features, with high-detail, 480V x 480H pixel, 16-level grayscale monochrome display with GRAYLINE®.

*Actual depth capabilities depend on transducer configuration and installation, bottom composition and water conditions. All sonar units typically read deeper in fresh water than salt water.





Full-Size Fishfinders/Chartplotters – 200 kHz

SONAR/GPS CHARTPLOTTERS WITH INTERNAL OR EXTERNAL ANTENNAS

The versatility and utility of a recording sonar/chartplotter combo, with an exclusive sunlight-viewable, super-high-resolution display, plus the precision of GPS+WAAS accuracy! A perfect space-saving and money-saving solution!



HOW IT WORKS: GPS+WAAS

GPS, short for Global Positioning System, is a navigation system that enables you to calculate your location utilizing medium-orbit Earth satellites. GPS receivers tune into microwave signals transmitted by these satellites. WAAS, or Wide Area Augmentation System, is a refinement of GPS that enhances accuracy to a 3-meter radius.

New! EGC-16W External Antenna

16-parallel channel GPS+WAAS reception with fast, strong satellite lock-ons, precise tracking, and position updates every second with the external EGC-16W receiver.

External EGC-16W GPS+WAAS

Available on models: 117-10, 123-28



FISHELITE® 642c iGPS COLOR SONAR/GPS CHARTPLOTTER – INTERNAL GPS ANTENNA



Part Number 116-18

DISPLAY

- Special 5"/12.7 cm diag. 256-color enhanced TFT display for maximum visibility and widest viewing angles even in bright sunlight
- 640V x 480H pixel resolution for superb sonar target detail/separation and exceptional chart definition
- High-speed screen updates
- Unique Resize Window to adjust split-screen display, and Overlay Data feature to place any sonar/GPS data on any full- or split-screen display

SONAR

- 1,500 watts peak-to-peak/188 watts RMS, depths to 800 ft./244 m*
- Includes high-speed, transom-mount 200 kHz Skimmer® transducer with built-in temp sensor and up to 60° of fish-detection coverage
- Adjustable Ping Speed with automatic HyperScroll™ for high-speed sounding

- COLORLINE™ to enhance target separation and help define bottom composition
- Multiple color sonar display modes for angler preference, light conditions, and expose fish hidden in cover
- FasTrack™ vertical bar flasher shows real-time sonar returns and echo strength

RECORDING

- Waterproof slot for one MMC/SD memory card (not included) to record sonar graphs and GPS data files, and to load high-detail electronic options for nav display
- Compatible with plug-and-play Lowrance FreedomMaps™, Lowrance Fishing Hot Spots® PRO, Lowrance LakeMaster® ProMaps, Lowrance NauticPath™ USA International and Navionics® electronic charts

CHARTPLOTTER

- Built-in antenna with 12-parallel channel GPS+WAAS precision for location accuracy
- Enhanced built-in background map of the continental U.S. and Hawaii with interstate exit services, plus nav aids and wrecks & obstructions
- Stores up to 1,000 waypoints, 1,000 event markers, 100 routes (up to 100 waypoints/route)
- Up to 100 retraceable plot trails, up to 10,000 points in any trail
- Up to 40 zoom ranges, 0.02 to 4,000 miles
- 42 graphic icons to mark key spots

FISHELITE® 640c COLOR SONAR/CHARTPLOTTER – NEW EXTERNAL 16-CHANNEL GPS ANTENNA



Part Number 123-28

DISPLAY

- Special 5"/12.7 cm diag. 256-color enhanced TFT display for maximum visibility and widest viewing angles even in bright sunlight
- 640V x 480H pixel resolution for superb sonar target detail/separation and exceptional chart definition
- High-speed screen updates
- Unique Resize Window to adjust split-screen display, and Overlay Data feature to place any sonar/GPS data on any full- or split-screen display

SONAR

- 1,500 watts peak-to-peak/188 watts RMS, depths to 800 ft./244 m
- Includes high-speed, transom-mount 200 kHz Skimmer® transducer with built-in temp sensor and up to 60° of fish-detection coverage
- Adjustable Ping Speed with automatic HyperScroll™ for high-speed sounding
- COLORLINE™ to enhance target separation and help define bottom composition

- Multiple color sonar display modes for angler preference, light conditions, and expose fish hidden in cover
- FasTrack™ vertical bar flasher shows real-time sonar returns and echo strength

RECORDING

- Waterproof slot for one MMC/SD memory card (not included) to record sonar graphs and GPS data files, and to load high-detail electronic options for nav display
- Compatible with plug-and-play Lowrance NauticPath™ International and Navionics® electronic charts

CHARTPLOTTER

- External antenna with 16-parallel channel GPS+WAAS precision for location accuracy
- Enhanced built-in world background map
- Stores up to 1,000 waypoints, 1,000 event markers, 100 routes (up to 100 waypoints/route)
- Up to 100 retraceable plot trails, up to 10,000 points in any trail
- Up to 40 zoom ranges, 0.02 to 4,000 miles

FISHELITE® 480 – SONAR/CHARTPLOTTER



Part Number 117-10

All the same FishElite® sonar/navigation/recording features, with high-detail, 480V x 480H pixel, 5"/12.7 cm diag. monochrome display with 16-level grayscale definition.

*Actual depth capabilities depend on transducer configuration and installation, bottom composition and water conditions. All sonar units typically read deeper in fresh water than salt water.



SEACHARTER®

Full-Size Fishfinder/GPS Chartplotter – 50/200 kHz



DUAL-FREQUENCY COLOR SONAR/GPS CHARTPLOTTER

A powerful value in a dual-frequency sonar/GPS chartplotter combo—with memory card versatility – featuring a sunlight-viewable display, and a rugged, built-in precision GPS+WAAS antenna! A convenient space-saving and money-saving package for vertical mounting on open cockpit boats.

SEACHARTER® 642c iGPS COLOR SONAR/GPS CHARTPLOTTER – INTERNAL GPS ANTENNA



*Actual depth capabilities depend on transducer configuration and installation, bottom composition and water conditions. All sonar units typically read deeper in fresh water than salt water.

Part Number 116-19

DISPLAY

- Special 5"/12.7 cm TFT display for maximum visibility and widest viewing angles even in bright sunlight
- 640V x 480H pixel resolution for sonar target detail/separation and exceptional chart definition
- Temp/speed/distance displays
- High-speed screen updates
- Unique Resize Window to adjust split-screen display, and Overlay Data feature to place any sonar/GPS data on any full- or split-screen display

SONAR

- 500 watts RMS/4,000 watts peak-to-peak, depths to 1,500 ft./457 m* with 50 kHz
- Includes high-speed, transom-mount 50/200 kHz Skimmer® transducer with built-in temp sensor
- Adjustable Ping Speed with automatic

- HyperScroll™ for high-speed sounding
- COLORLINE™ to enhance target separation and help define bottom composition
- Multiple color sonar display modes for angler preference, light conditions, and expose fish hidden in cover
- FasTrack™ vertical bar flasher shows real-time sonar returns and echo strength

RECORDING

- Waterproof slot for one MMC/SD memory card (not included) to record sonar graphs and GPS data files, and to load high-detail electronic options for nav display
- Compatible with plug-and-play Lowrance FreedomMaps™, Lowrance Fishing Hot Spots® PRO, Lowrance LakeMaster® ProMaps, Lowrance

NauticPath™ USA & International and Navionics® electronic charts

CHARTPLOTTER

- Built-in antenna with 12-parallel channel GPS+WAAS precision for location accuracy
- Enhanced built-in background map of the continental U.S. and Hawaii with interstate exit services, plus nav aids and wrecks & obstructions
- Stores up to 1,000 waypoints, 1,000 event markers, 100 routes (up to 100 waypoints/route)
- Up to 100 retraceable plot trails, up to 10,000 points in any trail
- Up to 40 zoom ranges, 0.02 to 4,000 miles
- 42 graphic icons to mark key spots

INTELLIMAP®

GPS Chartplotter



INTELLIMAP® 642c iGPS COLOR CHARTPLOTTER – INTERNAL GPS ANTENNA



Part Number 116-21

DISPLAY

- Special 5"/12.7 cm diag., 256-color, enhanced TFT display for maximum visibility and widest viewing angles even in bright sunlight
- 640V x 480H pixel resolution for exceptional chart definition
- Advanced fluorescent cold-cathode screen and keypad backlighting
- High-speed screen updates
- Unique Resize Window to adjust split-screen display, and Overlay Data feature to place any GPS data on any full- or split-screen display

RECORDING

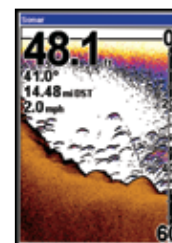
- Waterproof slot for one MMC/SD memory card (not included) to record GPS data files, and to load high-detail electronic options for nav display
- Compatible with plug-and-play Lowrance NauticPath™ International and Navionics® electronic charts

CHARTPLOTTER

- Built-in antenna with 12-parallel channel GPS precision for location accuracy
- Enhanced built-in world background map

- Stores up to 1,000 waypoints, 1,000 event markers, 100 routes (up to 100 waypoints/route)
- Up to 100 retraceable plot trails, up to 10,000 points in any trail
- Up to 40 zoom ranges, 0.02 to 4,000 miles
- 42 graphic icons to mark key spots

EASY-TO-VIEW DATA



SONAR

COLORLINE™ display enhances target separation and helps define bottom composition. (monochrome models feature GRAYLINE®)



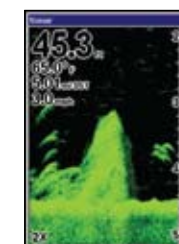
GPS

Enhanced built-in background map of the continental U.S. and Hawaii with interstate exit services, plus nav aids and wrecks & obstructions.



SPLIT SCREEN

Unique Resize Window to adjust split-screen display, and Overlay Data feature to place any sonar/GPS data on any full- or split-screen display.



NIGHT VIEWING

Multiple color sonar display modes for angler preference, light conditions, and expose fish hidden in cover.



VHF RADIOS

Fixed-Mount & Handheld

TALK IS CHEAPER

Don't leave port without one! Eagle® VHF radios connect you with other boats, home base, and emergency services. With unbeatable performance, features and choices, the Eagle value is even more impressive!



EVR-150 DSC FIXED-MOUNT MARINE VHF RADIO



Part Number 22-14

- A full-featured, 25W/1W, JIS 7 waterproof, fixed-mount VHF radio with DSC at the lowest price
- Full DSC SC-101 automatic distress operation plus high-resolution position polling and group calling with NMEA 0183 output to chartplotter
- Large 1"x1.8" backlit/adjustable FSTN screen with 4 line x 12 character alpha/numeric matrix display
- Left- or right-handed microphone with 5 backlit tactile keys for easy radio control
- Channel naming and Weather alert
- Immediate lat/lon position and time display without scrolling (with chartplotter connection)
- Dedicated 16/9 calling channel key
- Three favorite channel select mode with scan
- DW, 3CH and ALL SCAN modes
- 3W external speaker jack and SO239 antenna socket
- All available USA, Canada, International and 10 weather marine channels with naming
- Programmable
- Case and microphone fully JIS 7 waterproof
- Flush-mount kit included

EVR-100 DSC FIXED-MOUNT MARINE VHF RADIO



Part Number 22-12

- The first 7W/1W totally JIS 7 waterproof fixed-mount VHF for the inland fresh water market that's incredibly affordable
- 14 times the RF transmit power of standard FRS radios
- Left- or right-handed microphone with five backlit tactile radio control keys
- Large backlit 1"x1.8" segmented LCD display with last channel readout
- NOAA 1050Hz WX weather alert
- Three favorite channel select mode with scan
- DW, 3CH and ALL SCAN modes with instant skip of busy channels in ALL SCAN
- Battery monitor features 0.10 volt accuracy with low battery indicator
- 3W external speaker jack and SO239 antenna socket
- All legally allowed USA, Canada, International and 10 weather marine channels
- Case and microphone fully JIS 7 waterproof
- Flush-mount kit included

WHAT IS DSC?

Digital Selective Calling (DSC) provides for instant distress calls and digital messaging, and is a component of the international Global Maritime Distress and Safety System (GMDSS).

When connected with a GPS, the time, precise location and unique ID of the vessel in trouble is automatically broadcast when the DISTRESS button is pressed. So simple, it allows even a non-experienced VHF user to send this continuous distress message with a one-button procedure.

With DSC you can privately hail another DSC-equipped vessel, or shore station, with a known MMSI (Maritime Mobile Service Identity) number. It will also "ring" and notify you that you have a private hail, and automatically switch you to the open channel your caller is waiting on.

You can also send and receive messages digitally with DSC -- between one selected vessel, a group of vessels or ship-to-shore -- by dialing-in the MMSI number(s).

EHR-10 HANDHELD MARINE VHF RADIO



Part Number 22-11

- A 1W/5W handheld VHF radio that's a hands-down winner in features and low price
- Large, enhanced LCD illuminated display and function keys
- Long-life 1300 mAh NiMH battery pack and charger included
- Fully waterproof to strict JIS 7 standards
- All USA, Canada and International channels
- Bright LED TX indicator confirms transmissions
- RX/TX signal strength meter
- Memory indicator with 4-bar battery life gauge
- Power Saver Circuitry extends battery life
- Receive Signal Strength Indicator (RSSI) displays incoming/outgoing signals strength
- NOAA 1050Hz tone alert for weather/storm warnings
- Battery life:
8 hours (5W on 5-5-90% ratio)
10 hours (1W on 5-5-90% ratio)





CARTOGRAPHY

ENJOY EXCELLENT COVERAGE

Choices and value in plug-and-play cartography on memory cards for navigating land or water. Simply insert into your compatible Eagle® GPS, and you're ready to go—with the greatest of detail, affordability and ease.

LOWRANCE FISHING HOT SPOTS® PRO



The serious Lowrance angler's choice for navigation guidance on water and off. A choice of four regional high-capacity SD memory cards collectively present depth contours for 3,600 of America's prime fishing lakes, with over 380 lakes with legendary Fishing Hot Spots depth detail and marked fishing areas. Each also include exclusive Lowrance MapCreate™ Series 7 urban and rural detail of roads, highways, cities, searchable Points-of-Interests and more for getting to, around and from the lake.

FHSP-N – IL, IN, IA, MI, MN, MT, NE, ND, SD, WI, WY

#108-205

FHSP-E – AL, CT, DE, FL, GA, KY, ME, MD, MA, NH, NJ, NY, NC, OH, PA, RI, SC, TN, VA, WV

#108-206

FHSP-S – AZ, AR, CO, KS, LA, MS, MO, NM, OK, TX

#108-207

FHSP-W – CA, ID, NV, OR, UT, WA

#108-208

LOWRANCE LAKEMASTER® PRO MAPS



A decided favorite for Michigan, Minnesota and Wisconsin boaters and anglers with incredibly-detailed, expanded-coverage lake maps of popular fishing destinations. Along with thousands of lakes and ponds, and hundreds with depth contours, all ProMaps cards feature high-detail LakeMaster® surveyed lakes with 1'-3' depth contours. Plus, exclusive Lowrance MapCreate™ cartography is included for excellent city/roads/surface detail, plus thousands of searchable Points-of-Interests.

LKPM-MI – Over 18,000 lakes, bays, rivers and ponds; 800+ lakes with depth contours, with 49 lakes featuring high-definition LakeMaster depth contour surveys. Plus 96 lakes in IL, IN, OH and WI. #108-202.

LKPM-MN – Over 750 lakes; 79 lakes with the LakeMaster high-detail lake surveys. Includes WI, MI, IA, SD and ND waters. #108-203

LKPM-WI – 100 lakes with LakeMaster depth contour surveys, plus over 390 featuring standard depth contour intervals. Includes lakes in MI, IL and MN. #108-204

LOWRANCE NAUTICPATH™ USA



Detail-rich marine charting, preloaded on SD memory card for your Lowrance GPS, for one amazing low price. NauticPath™ USA Coastal delivers incredible, object-oriented detail with shaded depth contours, intertidal zones, spot soundings, wrecks, nav aids, port plans, restricted areas, anchorages, lights, tides and currents, expansive chart information (number, name, scale, etc.) and other navigation features. Just one card gives you expansive electronic chart coverage of the East, West, Gulf, Hawaii, and Alaska coasts, the Great Lakes, plus the Bahamas, Puerto Rico, and the U.S. Virgin Islands - all with the appearance of paper charts with seamless vector graphics. All this without unlock codes or added costs makes Lowrance NauticPath™ coastal electronic charts an unequalled marine cartography value!

NP-USA NauticPath USA Coastal #108-129



LOWRANCE FREEDOMMAPS™



USA EX

Expanded coverage on high-capacity SD memory cards for the whole USA. Features over 3,000 lakes with depth contours. Plus topo detail including elevations and hunting databases, cities/highways/landmarks, searchable Points-of-Interests and much more. Great detail and each a great deal in a choice of 5 broad geographic regions.

F101EX-N – MT, WY, ND, SD, NE, MN, IA, MI, WI, IL, IN

#108-209

F102EX-E – ME, VT, NH, MA, NY, CT, NJ, PA, DE, RI, MD, WV, OH, VA, KY, TN, NC, SC, GA, AL, FL

#108-210

F103EX-S – AZ, NM, CO, KS, OK, TX, MO, AR, LA, MS

#108-211

F104EX-W – CA, NV, UT, ID, OR, WA

#108-212

F105EX-A&H – AK, HI

Canada EX

Superbly-detailed electronic Canadian mapping with land-based topo data coverage for virtually all provinces and territories. Each SD memory card features world class map data from DMTI Spatial, with cities & towns, highways, city & rural roads, railways, rivers, streams, lakes & ponds, detailed shorelines, province & municipality boundaries, topographical contours, plus searchable Points-of-Interests, and much more.

F110EX-NC Nunavut, Northwest Territories, Yukon Territory, British Columbia, Alberta, Saskatchewan, Manitoba, Ontario, Quebec, Newfoundland, Labrador and Hudson Bay.

#108-214

F111EX-WC British Columbia, Alberta, Saskatchewan, Manitoba, Yukon NT and Nunavut, Great Slave Lake, Lake Superior, Hudson Bay, plus Seattle and Spokane coverage.

#108-215

F112EX-EC Manitoba, Ontario, Quebec, Newfoundland, Labrador, Prince Edward Island, Nova Scotia, New Brunswick, Hudson Bay and all Great Lakes, plus Milwaukee, Chicago, Toledo, Detroit, Cleveland, Buffalo and Syracuse.

#108-216

NAVIONICS®

Gold

Navionics electronic charts provide more information than paper charts and provide it on easy-to-use plug & play cartridges. Navionics charts are now a fundamental tool of navigation, featuring water depths, nav aids, obstructions, and other information necessary for safe navigation. Supplied on an SD card, the all new Navionics XL3 & XL9 cartography gives amazing coverage, similar in appearance to paper charts.

Silver

An "all-in-one" mapping solution, Navionics Silver covers all of the United States—inland, Great Lakes, coastal waters and the Bahamas. Paper-like maps with depths and points of interest, Navionics Silver is an excellent choice for Eagle owners.

One SD card holds all the following and more: East and West Great Lakes; Northeastern US with rivers and lakes, and canyons offshore to Georges Bank; US Mid-Atlantic with bathymetric details of mid-Atlantic canyons; the Southeastern US and Bahamas from Cape Fear to Turks and Caicos; the Gulf of Mexico from Florida to Brownsville, Texas; and the US West Coast, from Punta Santo Tomas, Mexico to Puget Sound (including the Columbia River all the way to the Snake River).

LOWRANCE MAPCREATE™

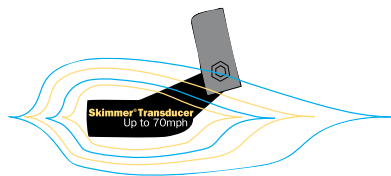
The complete, enhanced and expanded Lowrance system to make your own detailed topo mapcards over and over on your PC, with coverage for all 50 states. One DVD includes over 3,000 lakes with depth contours, topo contours with elevation markers, enhanced shorelines detail, 2 million Points-of-Interests, exclusive hunting databases, cities, highways, landmarks and scores more. Includes SD card reader-writer and blank, high-capacity SD memory card for a surprisingly low price!

Compatible for PC systems with Pentium 133 Mhz or higher and a DVD drive, 64MB RAM (128MB recommended), 200MB free hard disc space, high-color (16 bit) display, MicroSoft® Windows® 98 or higher.

#95-61

HIGH-PERFORMANCE SKIMMER® TRANSDUCERS

Popular, proven, and so good, they're patented. High-speed Skimmer® transducers feature a unique hydrodynamic design for the smoothest flow through water without interference from bubbles or turbulence.



SKIMMER® BENEFITS

Enjoy the best sounding performance and cleanest sonar readings, even at boat speeds up to 70 mph / 61 kts (with fixed transom-mount models). Perfect for all boats – including aluminum and steel hulls.

FEATURES

- Easy to install
- Built-in sensor for water surface temp
- Special "kick-up" bracket to help prevent accidental strike damage

50/200 kHz Skimmer® Transom-Mount



Specially designed for salt water or downrigger tracking with built-in temp sensor, and up to 90° of effective fish detection coverage with 50 kHz – and up to 40° with 200 kHz – using high sonar sensitivity settings. Not for shoot-thru-hull installation



200 kHz Skimmer® Transom-Mount



Perfect for inland freshwater and shallower in-shore coastal saltwater fishfinding with up to 60° of effective fish detection coverage when using high sensitivity settings. All 200 kHz Skimmer® transducers included with Eagle® sonar and combo sonar/GPS models for 2006 feature a built-in sensor for water surface temp readings. Can also be used for shoot-thru sounding on solid fiberglass hulls with proper installation.

200 kHz Skimmer® Portable



Great for smooth-flowing, high performance, go-anywhere fishfinding portability. Features a special suction cup bracket for easy mounting and placement, and still delivers up to 60° of wide fish detection coverage using high sensitivity settings, and built-in temp sensor. Not for high-speed use.

200 kHz Optional Pod Transducers



Super underwater coverage with the flexibility of trolling motor mount, or shoot-thru installation on solid fiberglass hulls. Available with or without built-in temp sensor, all offer a wider 60° fish detection coverage area with high sonar sensitivity settings.



Specifications

Cuda® Fishfinders

Model	Transducer Frequency (kHz)	Display Features	Resolution (V x H, pixels)	Case Size (H x W x D)	Backlighting Feature	Depth Capability*	Transmit Power (watts/RMS)
Cuda® 350 S/MAP Compact	200	4", 16-level Grayscale	240 x 160	5.8" x 4.3" x 2.5"	White LED	Up to 600'	800/100
Cuda® 300 Compact Sonar	200	4", 4-level Grayscale	240 x 160	5.8" x 4.3" x 2.5"	Incandescent	Up to 600'	800/100
Cuda® 300 Portable	200	4", 4-level Grayscale	240 x 160	5.8" x 4.3" x 2.5"	Incandescent	Up to 600'	800/100

FishEasy® Fishfinders

Model	Transducer Frequency (kHz)	Display Features	Resolution (V x H, pixels)	Case Size (H x W x D)	Backlighting Feature	Depth Capability*	Transmit Power (watts/RMS)
FishEasy® 350c	200	3.5", 256-color	320 x 240	5.8" x 4.3" x 2.5"	White LED	Up to 600'	800/100
FishEasy® 350c Portable	200	3.5", 256-color	320 x 240	5.8" x 4.3" x 2.5"	White LED	Up to 600'	800/100
FishEasy® 245 DS	83/200	4", 4-level Grayscale	240 x 160	5.8" x 4.3" x 2.5"	Incandescent	Up to 1,000'	1,500/188
FishEasy® 245 DS Portable	83/200	4", 4-level Grayscale	240 x 160	5.8" x 4.3" x 2.5"	Incandescent	Up to 1,000'	1,500/188

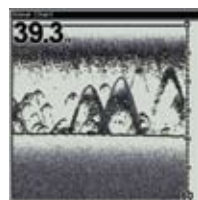
FishMark® Fishfinders

Model	Transducer Frequency (kHz)	Display Features	Resolution (V x H, pixels)	Case Size (H x W x D)	Backlighting Feature	Depth Capability*	Transmit Power (watts/RMS)
FishMark® 640c	200	5", 256-color	640 x 480	5.4" x 6.9" x 3.4"	Fluorescent	Up to 800'	1,500/188
FishMark® 480	200	5", 16-level Grayscale	480 x 480	5.4" x 6.9" x 3.4"	Amber LED	Up to 800'	1,500/188
FishMark® 320	200	5", 16-level Grayscale	320 x 320	5.4" x 6.9" x 3.4"	Incandescent	Up to 800'	1,500/188
FishMark® 320 Portable	200	5", 16-level Grayscale	320 x 320	5.4" x 6.9" x 3.4"	Incandescent	Up to 800'	1,500/188

SeaFinder® Dual-Frequency Fishfinders

Model	Transducer Frequency (kHz)	Display Features	Resolution (V x H, pixels)	Case Size (H x W x D)	Backlighting Feature	Depth Capability*	Transmit Power (watts/RMS)
SeaFinder® 640c DF	50/200	5", 256-color	640 x 480	5.4" x 6.9" x 3.4"	Fluorescent	Up to 1,500'	4,000/500
SeaFinder® 500c DF	50/200	5", 256-color	320 x 240	5.4" x 6.9" x 3.4"	Fluorescent	Up to 1,500'	4,000/500
SeaFinder® 480 DF	50/200	5", 16-level Grayscale	480 x 480	5.4" x 6.9" x 3.4"	Amber LED	Up to 1,500'	4,000/500

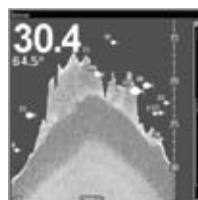
Easy-To-View Data



SONAR
GRAYLINE® display enhances target separation and helps define bottom composition.



SPLIT SCREEN
In split-screen sonar mode, anglers can zoom in for a closer look at targets on one side, while monitoring the entire water column on the other side.



NIGHT VIEWING
Night Viewing is one of the many sonar display modes you can select for enhanced viewing to match conditions—from total darkness to the brightest sunlight.

Specifications

FishElite® Fishfinders/GPS Chartplotters

Model	Transducer Frequency (kHz)	Display Features	Resolution (V x H, pixels)	Case Size (H x W x D)	GPS Antenna	Backlighting Feature	Depth Capability*	Transmit Power (watts/RMS)
FishElite® 642c iGPS	200	5", 256-color	640 x 480	5.4" x 6.9" x 3.4"	Internal	Fluorescent	Up to 800'	1,500/188
FishElite® 640c	200	5", 256-color	640 x 480	5.4" x 6.9" x 3.4"	External	Fluorescent	Up to 800'	1,500/188
FishElite® 480	200	5", 16-level Grayscale	480 x 480	5.4" x 6.9" x 3.4"	External	Amber LED	Up to 800'	1,500/188

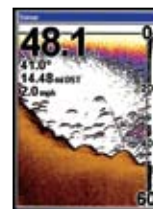
SeaCharter® Fishfinders/GPS Chartplotters

Model	Transducer Frequency (kHz)	Display Features	Resolution (V x H, pixels)	Case Size (H x W x D)	GPS Antenna	Backlighting Feature	Depth Capability*	Transmit Power (watts/RMS)
SeaCharter® 642c DF iGPS	50/200	5", 256-color	640 x 480	5.4" x 6.9" x 3.4"	Internal	Fluorescent	Up to 1,500'	4,000/500

IntelliMap® Chartplotter

Model	GPS Antenna	Display Features	Resolution (V x H, pixels)	Case Size (H x W x D)	Backlighting Feature	Zoom Ranges (miles)
IntelliMap® 642c iGPS	Internal GPS+WAAS	5", 256-color	640 x 480	5.4" x 6.9" x 3.4"	Fluorescent	40 (0.02-4,000)

Easy-To-View Data



SONAR
COLORLINE™ display enhances target separation and helps define bottom composition. (monochrome models feature GRAYLINE®)



SPLIT SCREEN
Unique Resize Window to adjust split-screen display, and Overlay Data feature to place any sonar/GPS data on any full- or split-screen display.



GPS
Enhanced built-in background map of the continental U.S. and Hawaii with interstate exit services, plus nav aids and wrecks & obstructions.



NIGHT VIEWING
Multiple color sonar display modes for angler preference, light conditions, and expose fish hidden in cover.



About Navico

Navico is the parent company to five leading marine electronics brands: B&G®, Eagle®, Lowrance®, Northstar and Simrad®. Navico has approximately 2,500 employees globally and is headquartered in Oslo, Norway. The company has development and manufacturing facilities in the USA, Mexico, the UK, Norway and New Zealand.

www.navico.com

All trademarks are property of their respective owners. Products, features and specifications are the most recent available at the time of printing and are subject to change without notice. Eagle® reserves the right to make changes and improvements in our products periodically without incurring the obligation to install such improvements and changes on equipment or items previously manufactured. ©2008 Navico, Inc.





The Way to Go

NAVICO AMERICAS

Corporate Headquarters
12000 East Skelly Drive
Tulsa, OK 74128-2486 USA
918.437.6881

Canada Service Center
919 Matheson Blvd. East
Mississauga, Ontario
CANADA L4W 2R7
905.629.1614

www.eaglenav.com

Customer Service:

Weekdays:
800.324.1354 (continental USA)
800.661.3983 (Canada)

Anytime:
www.eaglenav.com/support
Self-service product answers
and services

Parts/Accessories:

Weekdays:
800.324.0045 (continental USA)
800.661.3983 (Canada)

Anytime:
www.lei-extras.com